

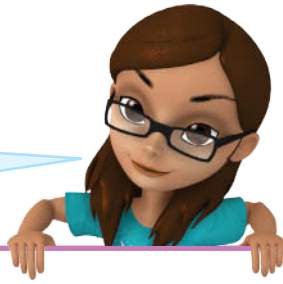


Homework 12-7

Using Metric Units of Capacity

Another Look!

Liters and milliliters are used when measuring capacity in metric units.



Capacity is the amount of liquid that an object can hold. The metric system of measurement uses the units liter (L) and milliliter (mL).

You would use liters to measure the amount of water in a water bottle or the amount of gasoline in a gas can.

A milliliter is a very small unit of measurement. You would use milliliters to measure small amounts of liquid, such as measuring an amount of liquid medicine.

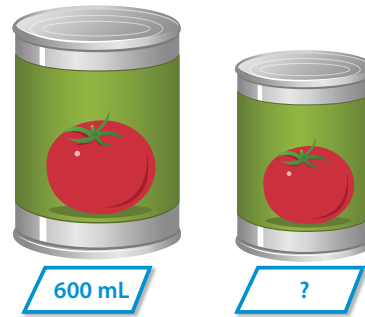
$$1 \text{ L} = 1,000 \text{ mL}$$

In **1** through **8**, choose the more appropriate unit to measure the capacity. Write L or mL.

1. thimble
2. kitchen sink
3. coffee creamer container
4. bucket of water for a horse
5. squirt gun pistol
6. goldfish bowl
7. vase
8. wading pool
9. **Number Sense** A container holds 5 L of fluid. Does it hold more than or less than 500 mL of fluid?
10. A bottle is filled with saline solution for eyes. Is the bottle more likely to hold 15 mL of solution or 1 L of solution?

11. **Number Sense** Megan found that a bathtub contained 30 L of water. Then she measured the same amount of water and found that the capacity was 300 mL. Is the number of milliliters reasonable? Explain.

12. **Estimation** About how many mL of tomato juice does the smaller can hold?



13. **Explain** Would you be more likely to measure the amount of water in your kitchen sink in liters or milliliters? Explain.

14. **Connect** A gallon of milk is about the same as 4 L of milk. About how many liters of milk are there in 10 gal?

15. Chris measures the amount of juice in a large bottle in liters. Is this unit of measure appropriate? Explain.

16. Sarah says she drinks 250 milliliters of water eight times each day. Which of the following is the best estimate for the amount of water Sarah drinks in one day?

- A 2,000 L
- B 250 L
- C 2 L
- D 2 mL

17. Phil needs to buy lemonade for a school party. Which container should he buy if he wants to get the most lemonade?



18. **Extend Your Thinking** Chef Tom's stew is too thin. To thicken the stew, he must add two teaspoons of liquid cornstarch every 10 minutes to make the stew thick enough. Chef Tom knows that a teaspoon is about the same as 5 mL. About how many mL of cornstarch will he add in 30 minutes?